

Overview

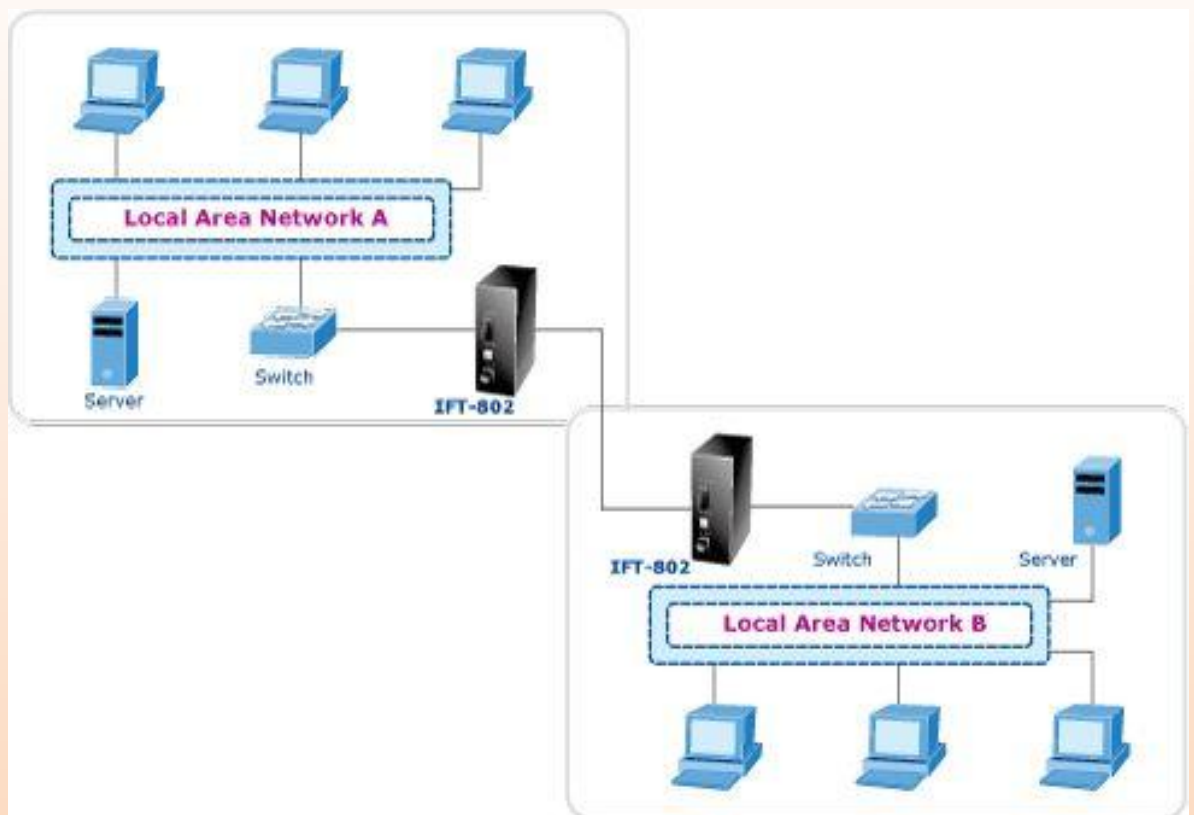


IFT-802

The PLANET IFT-802 industrial 10/100BaseTX to 100BaseFX Media Converter is a cost-effective solution for the converting 10/100Base-TX (Auto MDI/MDIX) to 100Base-FX cabling. It provides two power inputs that can be connected simultaneously to two 12-48V DC power sources. If one power input fails, the other one acts as a backup.

The PLANET IFT-802 also provides a relay alarm output to warn of a port or link failure, enabling a technician to respond quickly with the appropriate emergency operation procedures.

Also, there are DIP-switches to set the operational mode for the relay alarm, Fibre ports, link loss forwarding function, and UTP operation mode.



Industrial Conformance

- 12 to 48V DC, redundant power with polarity reverse protect function and connective removable terminal block for master and slave power
- 0 to 60 Degree C operation temperature
- IP-30 Aluminium case
- EMI complies with FCC Class A, CE EN6100-4-2, CE EN6100-4-3, CE EN6100-4-4, CE EN6100-4-5 and CE EN6100-4-6
- Stability testing with IEC60068-2-32(Free fall), IEC60068-2-27(Shock) and IEC60068-2-6(Vibration)

IFT-802 Key Features & Specification



Hardware Feature

- UTP to Fibre Media converter
- Auto Negotiation Speed and Half / Full Duplex
- Supports 12 to 48V DC power inputs
- TX port support Auto MDI / MDI-X
- Relay alarm output for port link failure
- IEEE 802.3x flow control support
- Flow control on full-duplex
- Back pressure on half-duplex
- Built-in Link Lose Forwarding Technology
- DIN-Rail or wall mountable
- DIP-switches to set the operation mode and Link- Lost-Forwarding function

IFT-802

Specification

Model	IFT-802
Standard	IEEE 802.3 10BASE-T IEEE 802.3u 100BASE-TX/100Base-FX IEEE 802.3x Flow Control and Back pressure
10/100Mbps TP	CAT-3/5 (10/100Mbps) Twisted Pair cable Auto MDI/MDI-X and Auto-Negotiation Function Support
Fibre Connector	SC Multi-Mode model
Switching Architecture	Store and forward
Fibre Parameters	Fibre Core: Multi-Mode (62.5/125um, 50/125um) Wavelength: 1310nm Fibre Distance: Multi-Mode Fibre 2Km (Available on Multi mode model)
Link Lost Forward	TX to Fibre: If TX port link down, the media converter will force Fibre port to link down Fibre to TX: If Fibre port link down, the media converter will force TX port to link down.
DIP Switch	DIP Switch 1: ON: Enables Port Alarm OFF: Disables Port Alarm DIP Switch 2: ON: Enables LLF (Link Lose Forwarding) OFF: Disables LLF (Link Lose Forwarding) DIP Switch 3: ON: 100Base-FX Half-mode OFF: 100Base-FX Full-mode DIP Switch 4: ON: 100Base-TX Full-duplex mode OFF: Auto-Negotiation
LED	Power (Green), Power1 (Green), Power2 (Green), Fault (Orange) Fibre: Link / Activity (Green) Half / Full Duplex (Orange) TX: 10/100(Green) Link (Green) Half / Full Duplex (Orange)
Power Supply	12 to 48 V DC, redundant power with polarity reverse and overlap current protection function
Power Consumption	4.6 Watts
Installation	Provide DIN rail kit and wall mount ear for 3-way installation
Operating environment	0~60 Degree C, 5~90%RH (Non-condensing)
Storage environment	-40~85 Degree C, 5~90%RH (Non-condensing)
Dimension (W x D x H)	54 x 105 x 155 mm
Emission	FCC Class A, CE mark
Stability testing	IEC60068-2-32(Free fall), IEC60068-2-27(Shock), IEC60068-2-6(Vibration)

Ordering Information

IFT-802	Industrial 10/100Base-TX to 100Base-FX Media Converter
---------	--