

# High Speed 5.7Mbps Ethernet LAN Extender

## Ethernet Beyond 100 Metres



The GRT-501 is a G.SHDSL.bis router that supports symmetric data rates from 192kbps to 5.7Mbps, for LAN-to-LAN network connections up to 6.7km (4.2 miles) using single pair telephone cables. (BT EPS 9 Baseband Standard Leased Lines)

The Planet GRT-501 includes high-end Bridging / Routing capabilities and advanced functions such as DMZ, Virtual Server, and VPN pass-through. With virtual LANs becoming an important internetworking requirement the GRT-501 supports IEEE 802.1Q VLAN over ATM networks.

With the built-in Simple Network Management Protocol (SNMP) and web-based management, the GRT-501 offers an easy-to-use platform-independent management and configuration facility.

VLAN

SNMP

QoS

Virtual Server

DHCP Server

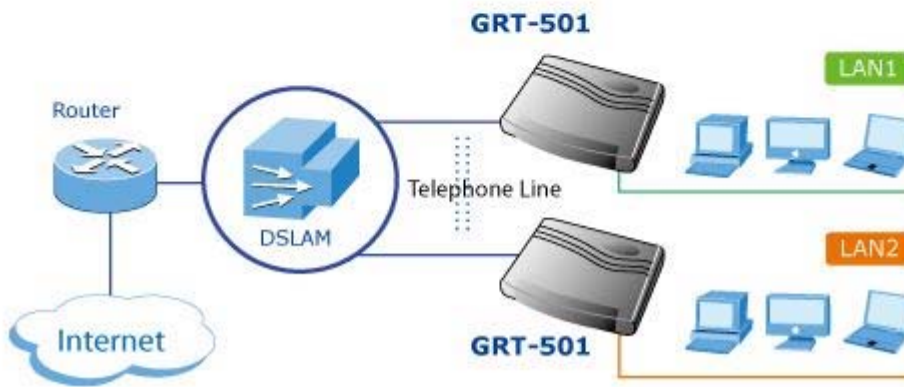
Firewall

DMZ

### LAN to LAN connection



### ISP connection



# GRT-501 LAN Extender Specifications

## Ethernet Beyond 100 Metres

	GRT-501
<b>Product</b>	
Product	G.SHDSL.bis Bridge Router
<b>Hardware</b>	
Standard	Compliant with ITU-T G.991.2 Standard Annex A / B Compliant with G.SHDSL.bis Annex A / B / F / G TC-PAM Line Code Symmetric data transmission speed up to 5.7 Mbps on 2-wire Multi-range from 192kbps to 5.7Mbps
Protocol	RFC 1577 - Classical IP over ATM (RFC 1577) RFC 2364 - PPP over ATM RFC 1483 / 2684 - Ethernet over ATM RFC 2516 - PPP over Ethernet (fixed and dynamic IP) RFC 2364 - PPP over ATM (fixed and dynamic IP)
AAL and ATM Support	Supports up to 8PVCs ATM Forum UNI 3.1 / 4.0 PVC Supports OAM F4 / F5 AIS / RDI and Loopback VC multiplexing and SNAP / LLC Integrated ATM QoS support (UBR, CBR, VBR-rt, and VBR-nrt)
LAN Port	1 x 10Base-T / 100Base-TX (Auto-Negotiation, Auto MDI / MDI-X)
Console	1 x RS-232 (DB9)
Button	1 x Reset Button
LED Indicators	PWR, WAN LNK / ACT, LAN 10M/100M, ALM
<b>Software</b>	
Protocol	IEEE 802.1D transparent learning bridge IEEE 802.1Q VLAN Supports IP / TCP / UDP / ARP / ICMP / IGMP protocols IP routing with static routing and RIPv1 / RIPv2 IP multicast and IGMP proxy Network address translation (NAT / PAT) DMZ host / Multi-DMZ / Multi-NAT function Virtual Server (RFC1631) DNS relay and caching DHCP server, client and relay
Security	Built-in NAT Firewall PPP over PAP (RFC1334) PPP over CHAP (RFC1994) Password protection for system management
VPN	VPN (PPTP / L2TP / IPSec) pass-through
Management	Web-based configuration Command-line Interpreter (CLI) via Console Command-line Interpreter (CLI) via Telnet Upgrades Software via web-browser / TFTP server SNMPv1 and v2
<b>Environment Specification</b>	
Dimension (W x D x H)	145 x 188 x 33 mm
Power	9V DC, 1A
Temperature Humidity	Operating: 0~45 Degree C, 0~90% (non-condensing), Storage: -10~70 Degree C, 0~95% (non-condensing)
Emission	FCC, CE