

GEPON OLT

- **EPL-1000**



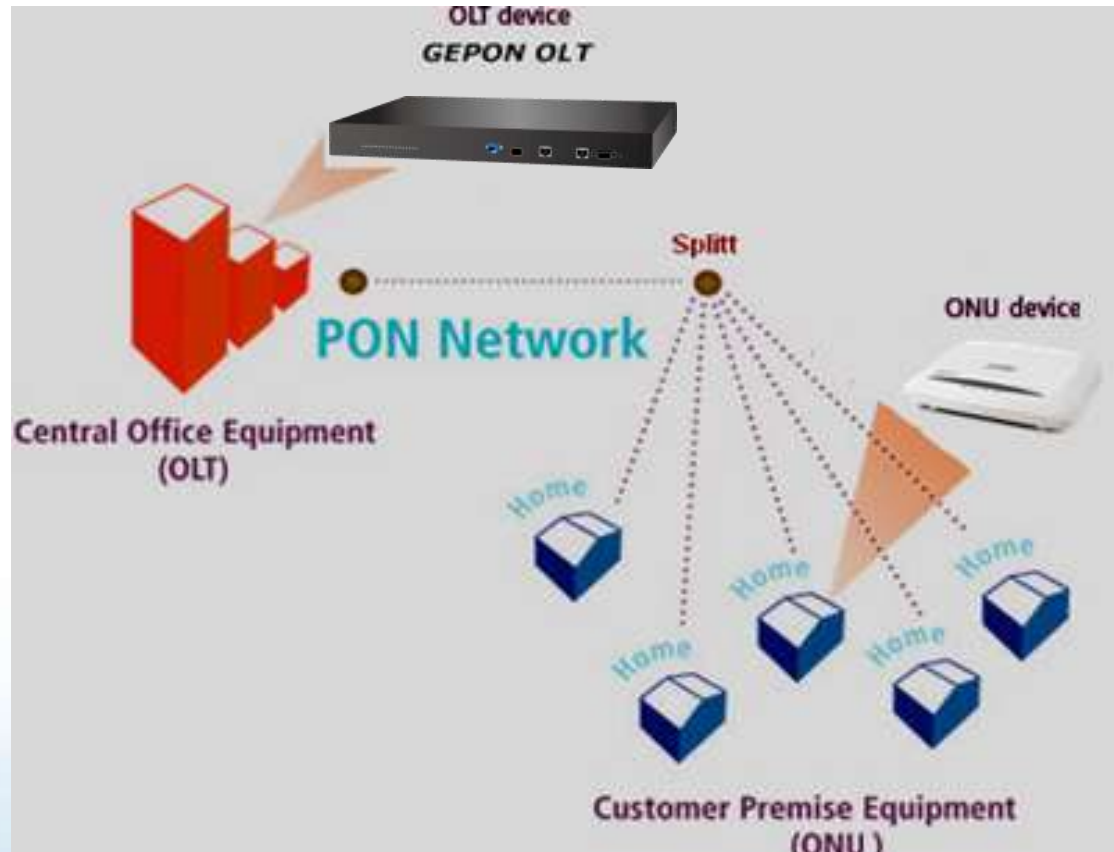
Saratota Ltd Distributors of Planet Products, Weltech Business Centre, Ridgeway, Welwyn Garden City, Hertfordshire AL7 2AA
Tel 0845 500 1447
e-mail sales@saratota.co.uk
Web www.planetcomms.co.uk



- **Product Overview**
- **Product Features**
- **Application**
- **Deployment**
- **Appendix**

- **PON (Passive Optical Network)**

- **OLT, Splitter and ONU**
- **High Scalability and Flexibility for Easy Installation and Maintenance**
- **Long-Distance Coverage**
- **High Bandwidth**
- **P2MP (point-to-multipoint)**
- **Cost-Effective Operations beyond Initial Fiber Deployment**

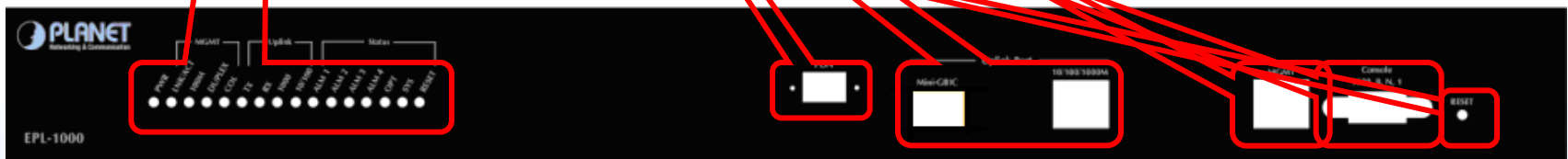


- Broadband Type / Comparison**

Type	PON	VDSL2	ADSL2+
Max. Upstream	1.25Gbps	100Mbps	3.5Mbps
Max. Downstream	1.25Gbps	100Mbps	24Mbps
Max. Distance	20km	1.8km	5.6km
media	optical	copper	copper

◆ Front Panel of IDL-2402 -- LED

- ✓ **LED: PWR, MGMT, Uplink, Status**
- ✓ **PON Port**
- ✓ **Uplink Ports: GE Combo TP / SFP Interface**
- ✓ **MGMT Port**
- ✓ **Console Port**
- ✓ **RESET**

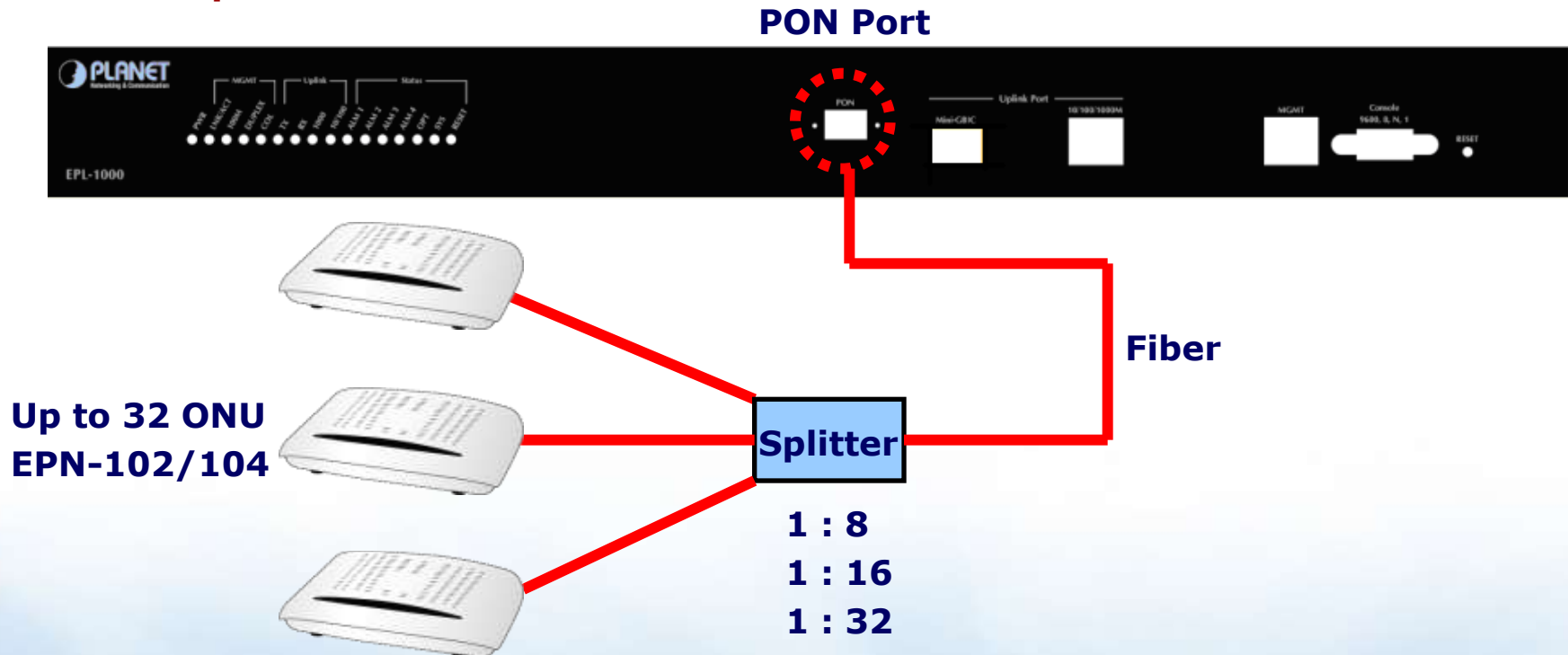


1U / Rack-mountable

◆ How to connect

PON Interface

- ✓ **Splitter**
- ✓ **Up to 32 ONU (EPN-102 / 104)**
- ✓ **Up to 20km**



◆ How to Manage the EPL-1000

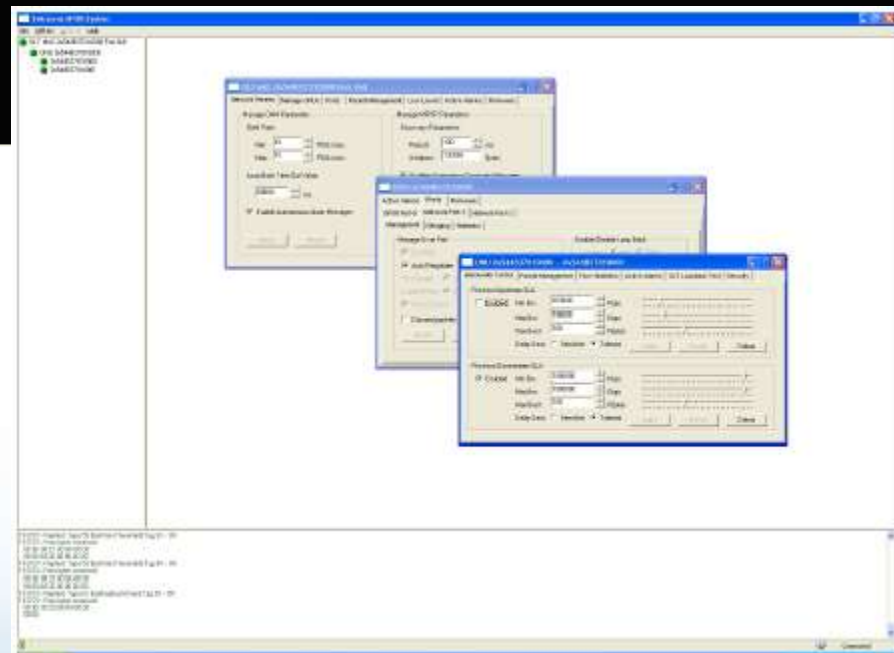
2 ways for Management

- ✓ **MGMT Port** **10/100M Ethernet Port**
- ✓ **Console Port** **RS-232 Serial Port**



MGMT :
User Friendly GUI Utility

Console :
CLI (Command Line Interface)



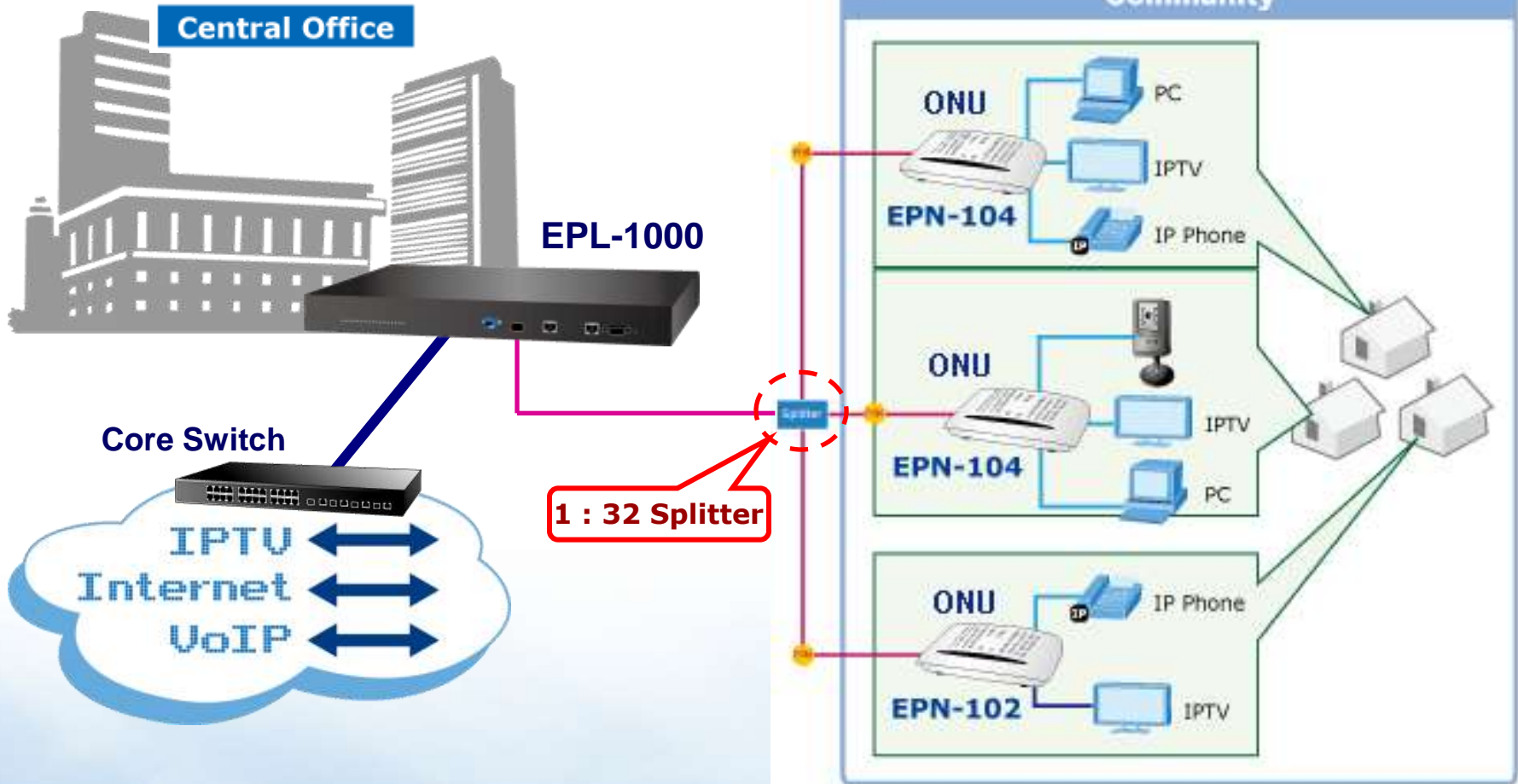
- **Up to 1.25Gps for upstream and downstream**
- **Up to 20km distance**
- **One PON Port and One Gigabit TP / SFP Combo Interface**
- **Up to 32 ONUs split ratio**
- **PON interface complies with IEEE 802.3ah.**
- **IEEE 802.3ah compliant Forward Error Correction (FEC).**
- **128-bit Advanced Encryption Standard (AES) encryption for both downstream and upstream directions.**

- **Dynamic Bandwidth Allocation (DBA) Support**
- **802.1x authentication engine with remote administration for device and user authentication.**
- **Supports 4K MAC Addresses / MAC Filtering**
- **Supports 802.1Q VLAN**
- **Supports 802.1P QoS**
- **Supports IGMP**

- **Full management through an Operation Administration Management (OAM) protocol based on IEEE 802.3ah.**
- **Service Level Agreement (SLA) support**
- **Unicast, broadcast and multicast traffic control**
- **User-Friendly GUI Utility**
- **Remote ONU Management**

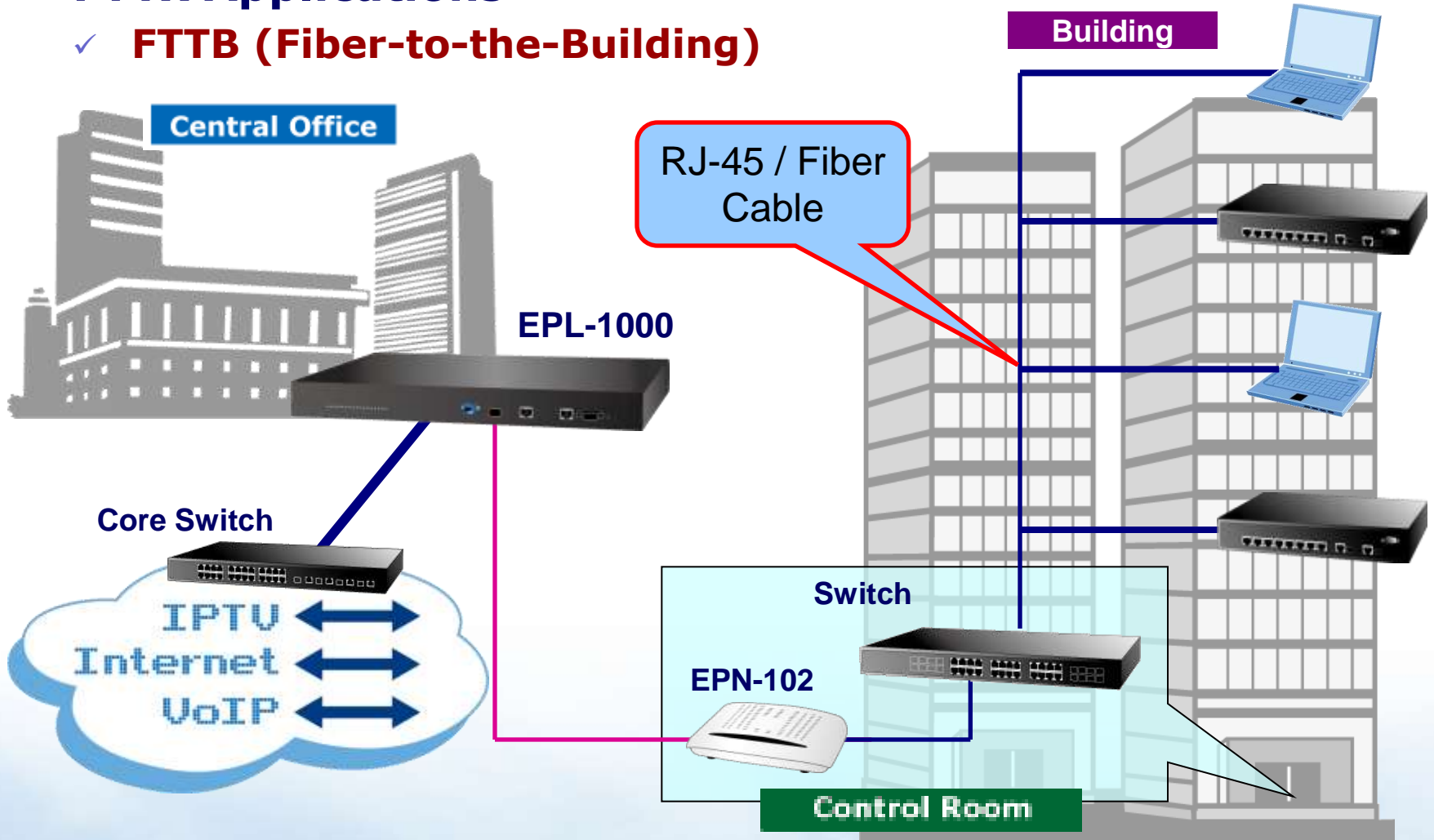
FTTx Applications

- ✓ **FTTH (Fiber-to-the-Home)**



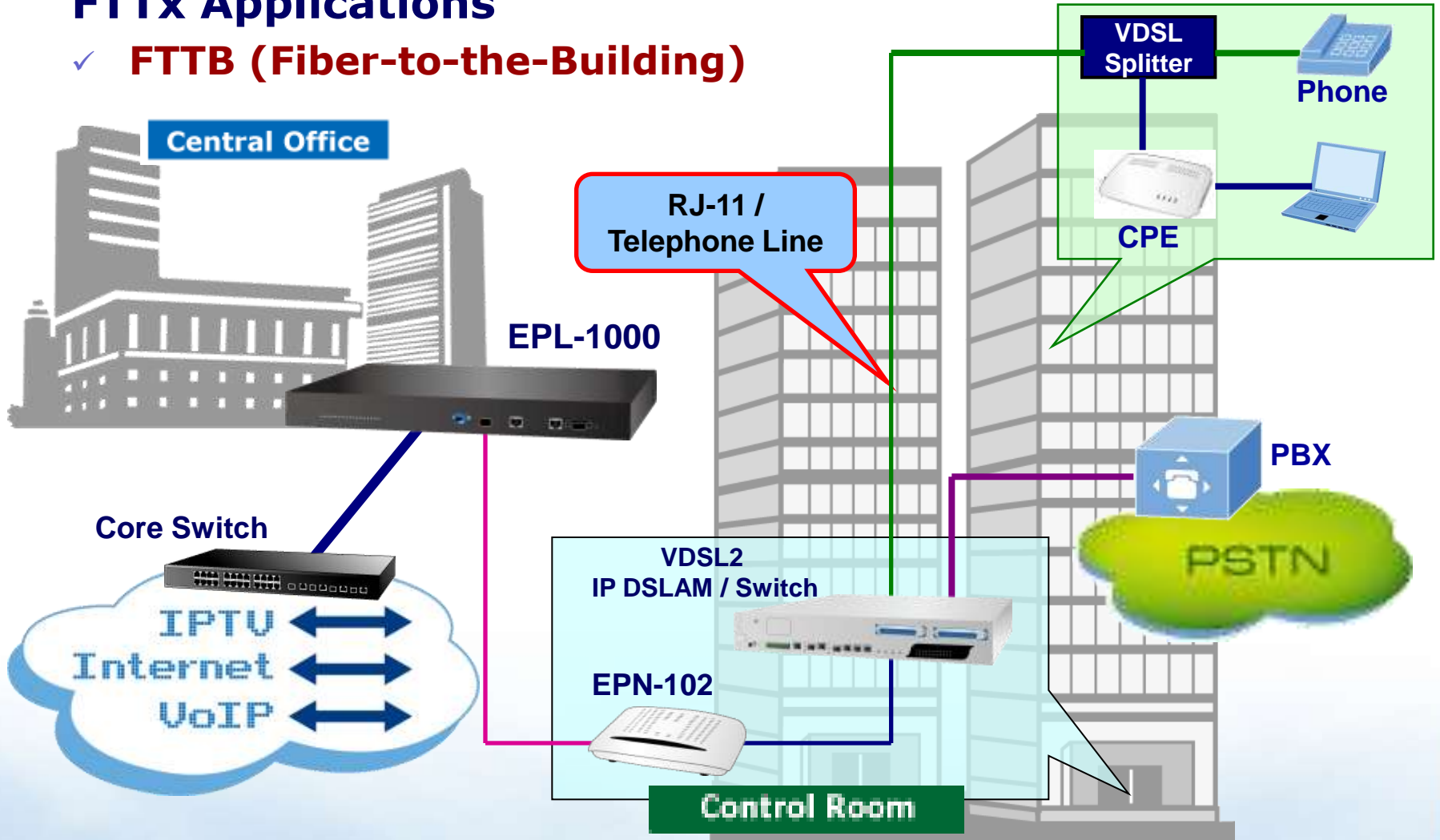
FTTx Applications

- ✓ **FTTB (Fiber-to-the-Building)**



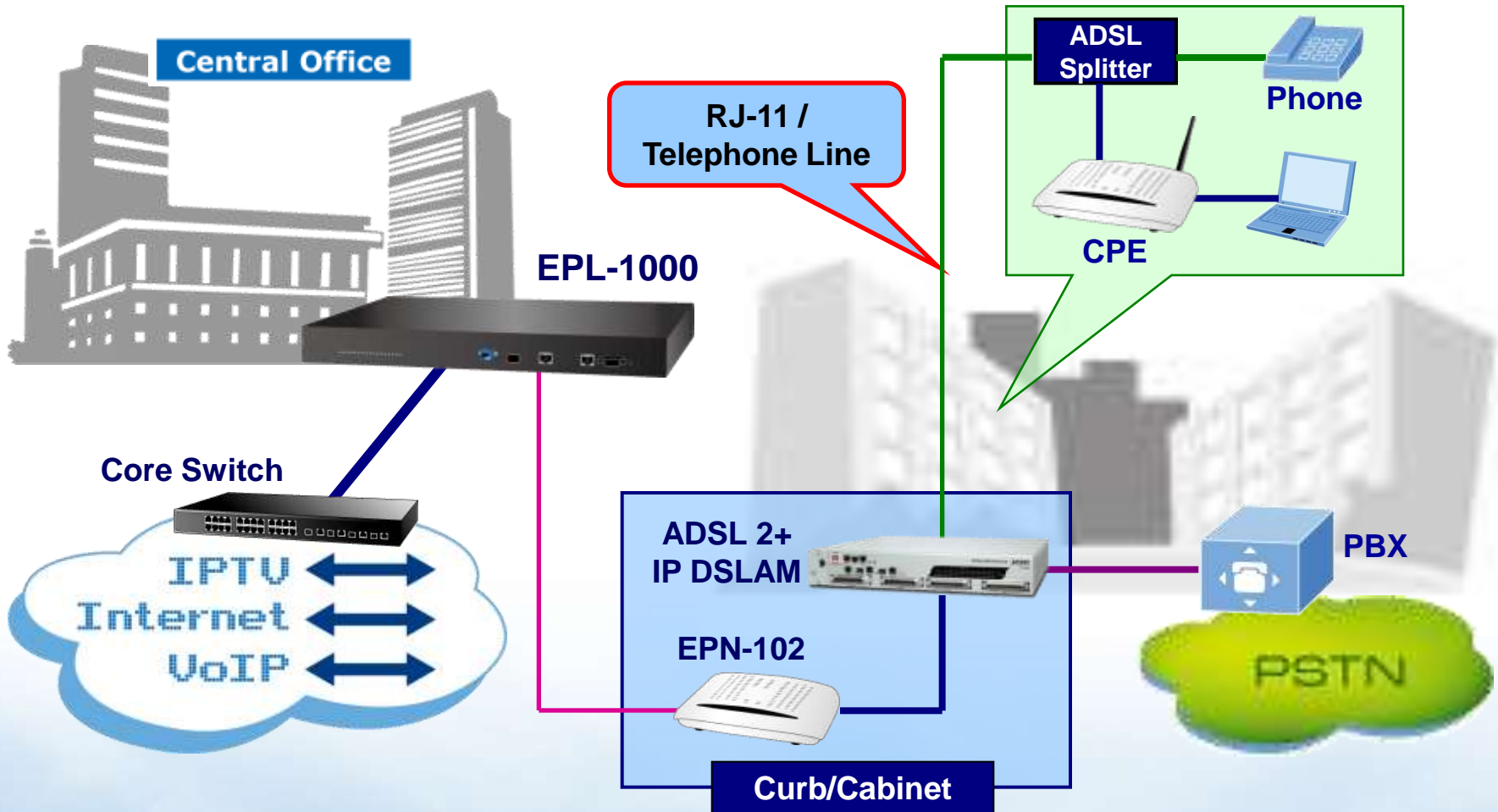
FTTx Applications

✓ FTTB (Fiber-to-the-Building)

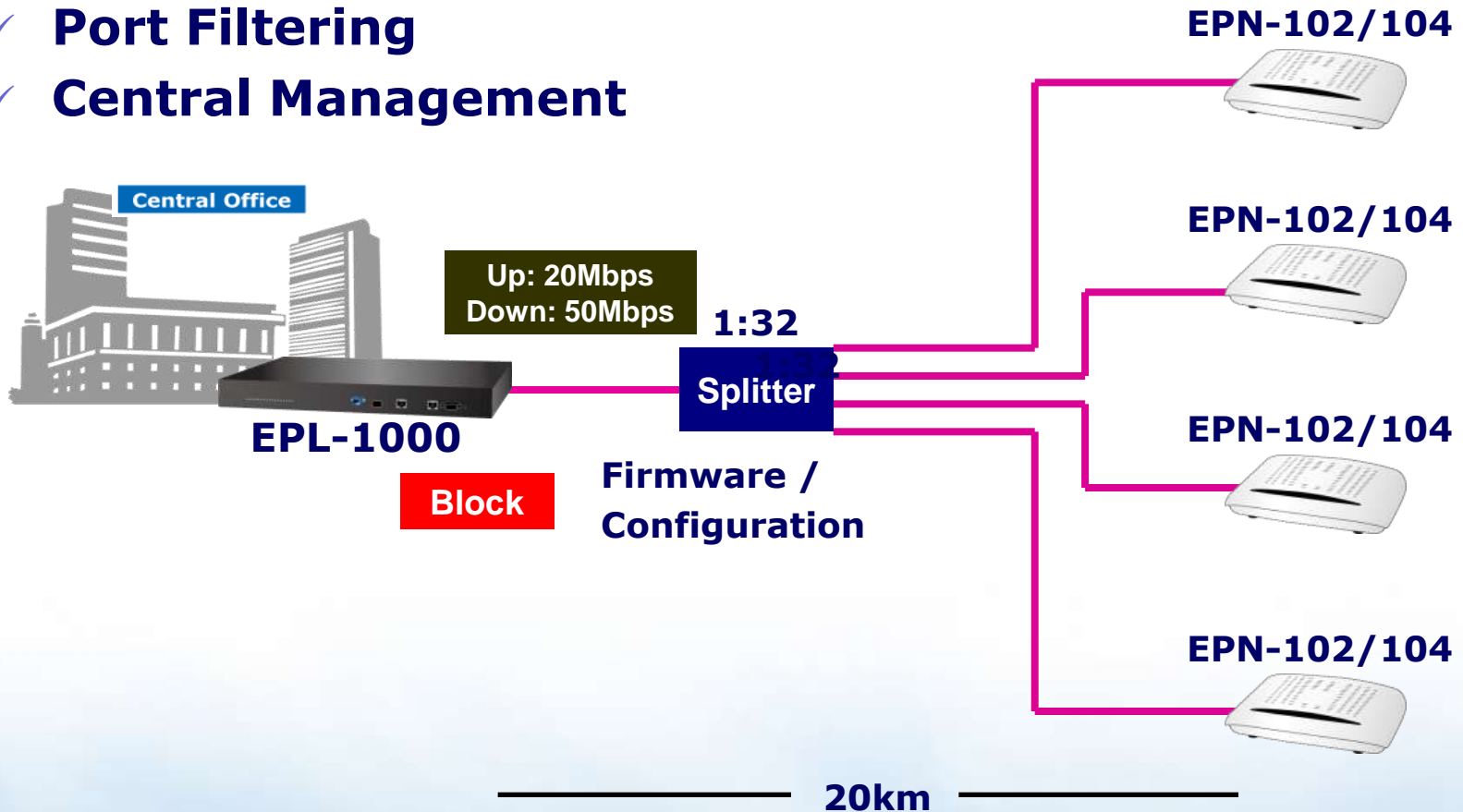


FTTx Applications

✓ FTTC (Fiber-to-the-Curb/Cabinet)



- ✓ Long Distance
- ✓ Bandwidth Allocation
- ✓ Port Filtering
- ✓ Central Management



- **Target Markets**
 - **System Integrator**
 - **Telecom Provider**
 - **ISP (Internet Service Provider)**
 - **NSP (Network Service Provider)**

- **Target Customers**
 - **Who buy our GEPON ONU series**
 - ✓ **EPN-102 / 104**
 - **Who buy our ADSL / VDSL series**
 - ✓ **IDL-2400/2401/2402/4800/4801/4802**
 - ✓ **VC-810S/2402**
 - **Who buy our Media Conversion and Fiber switch**
 - ✓ **GST-80x/GST-70x**
 - ✓ **SGSW-24240/WGS3-24240**

◆ Related Products:

■ **GEPON ONU (Optical Network Unit)**

- ✓ **EPN-102 (1-PON Interface, 1-Port FE + 1-Port GE Interface)**
- ✓ **EPN-104 (1-PON Interface, 4-Port FE Interface)**



ACTIVATING IP POWER



Saratota Ltd Distributors of Planet Products, Weltech Business Centre, Ridgeway, Welwyn Garden City,
Hertfordshire AL7 2AA
Tel 0845 500 1447
e-mail sales@saratota.co.uk
Web www.planetcomms.co.uk

